

EDGE SYSTEMS, L.L.C.

CORPORATE STYLE GUIDE

Presentation Guidelines

Presentation Style Guidelines

Fonts:

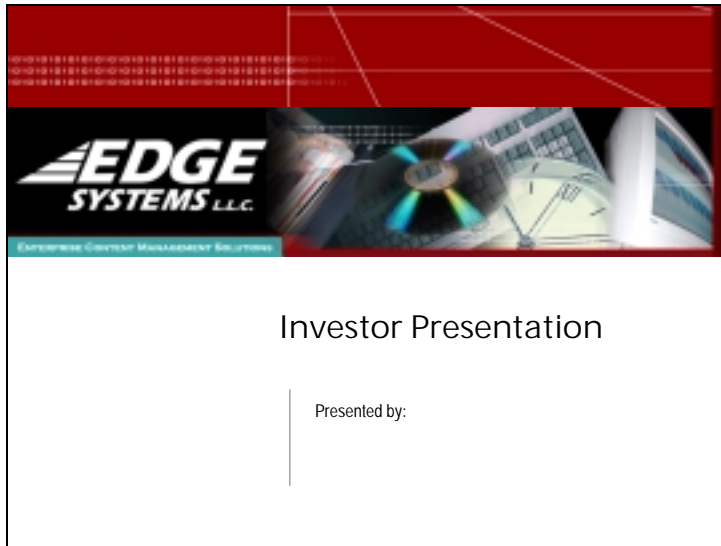
Eras Bold Italic (logo)
Copperplate Gothic Bold (tagline)
Eras Demi Bold Italic (header 1)
Arial Narrow Bold (header 2)
Arial or Helvetica Narrow (body copy)

Colors:

194PMS
R-138, G-40, B-63
C-0, M-91, Y-56, K-34
194 Web
8A283F, 993333, 990000 (web safe)
Teal
R-0, G-153, B-153
C-81, M-19, Y-43, K-1
009999 (web safe)

Edge Investor Presentation

Title Slide



Page Slide



Web Guidelines

Web Style Guidelines

Fonts:

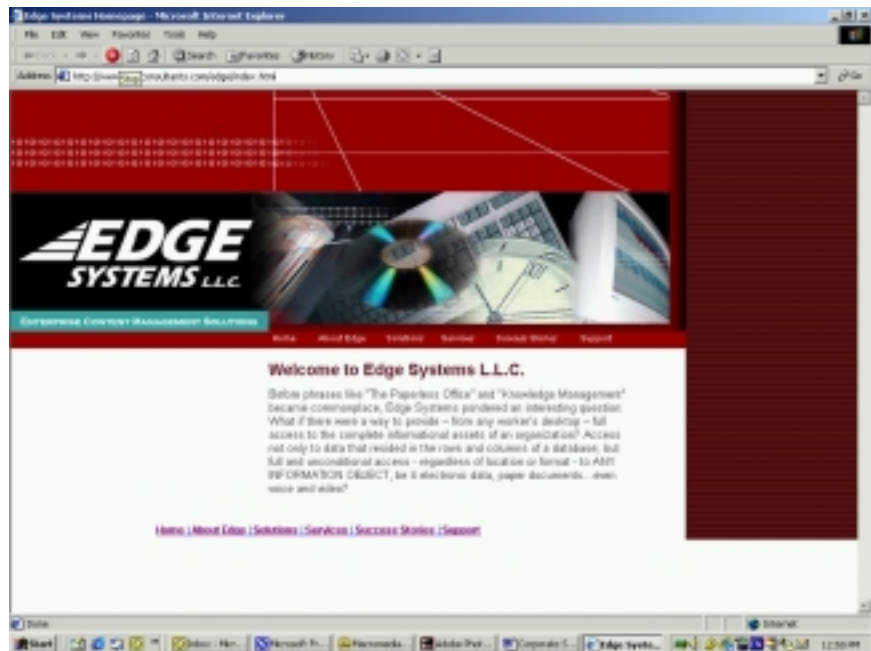
- Eras Bold Italic (logo)
- Copperplate Gothic Bold (tagline)
- Eras Demi Bold Italic (header 1)
- Arial Narrow Bold (header 2)
- Arial or Helvetica Narrow (body copy)

Colors:

- 194PMS
- R-138, G-40, B-63
- C-0, M-91, Y-56, K-34
- 194 Web
- 8A283F, 993333, 990000 (web safe)
- Teal
- R-0, G-153, B-153
- C-81, M-19, Y-43, K-1
- 009999 (web safe)

Edge Corporate Website

Home Page



About_Edge Page



Web Style Guidelines

Fonts:

Eras Bold Italic (logo)
Copperplate Gothic Bold (tagline)
Eras Demi Bold Italic (header 1)
Arial Narrow Bold (header 2)
Arial or Helvetica Narrow (body copy)

Colors:

194PMS
R-138, G-40, B-63
C-0, M-91, Y-56, K-34
194 Web
8A283F, 993333, 990000 (web safe)
Teal
R-0, G-153, B-153
C-81, M-19, Y-43, K-1
009999 (web safe)

Home Page

```
.links { font-family: Arial; font-size: 9pt; color: #0000FF; text-decoration:
underline; font-weight: bold; margin-top:12 }
.edgesubtitle { font-family: Arial Narrow; font-size: 12pt; font-weight: bold; margin-bottom:3 }
.edgepagetitle { font-family: Arial; font-size: 14pt; font-weight:
bold; margin-bottom: 6; color:#6B1829; margin-top:12 }
.edgebodycopy { font-family: Arial Narrow; font-size: 10pt; text-align: left; margin-top: 0;
margin-bottom: 3; color:#333333; margin-right:0 }
.itemText { text-decoration: none; color: #FFFFFF; font: 10px Arial, Helvetica }
.itemBorder { border: 1px outset #FFFFFF}

.crazyBorder { border: 2px outset #ffffff }
.crazyText { text-decoration: none; color: #ffffff; font: Bold 10px Arial, Helvetica }
```

Internal Pages

```
.links { font-family: Arial; font-size: 9pt; color: #0000FF; text-decoration:
underline; font-weight: bold; margin-top:12 }
.edgesubtitle { font-family: Arial Narrow; font-size: 12pt; font-weight: bold; margin-bottom:3 }
.edgepagetitle { font-family: Arial; font-size: 14pt; font-weight:
bold; margin-bottom: 6; color:#6B1829; margin-top:12 }
.edgebodycopy { font-family: Arial Narrow; font-size: 10pt; text-align: left; margin-top: 0;
margin-bottom: 3; color:#333333; margin-right:0 }
.itemText { text-decoration: none; color: #FFFFFF; font: 9px Arial, Helvetica }
.itemBorder { border: 1px outset #FFFFFF}

.crazyBorder { border: 2px outset #ffffff }
.crazyText { text-decoration: none; color: #ffffff; font: Bold 9px Arial, Helvetica }
```

Edge Letterhead

Letterhead Style Guidelines

Fonts:

Eras Bold Italic (logo)

Avant Garde (address line)

Colors:

194PMS (logo)

Black for type



Edge Business Cards

Business Card Style Guidelines

Fonts:

Eras Bold Italic (logo)
Avant Garde (Name and address)
Arial Narrow (Title and misc. info)

Colors:

194PMS (logos)
Black for type



Edge Business Envelopes

Business Envelope Style Guidelines

Fonts:

Eras Bold Italic (logo)

Avant Garde (Name and address)

Colors:

194PMS (logos)

Black for type



Edge Fax Cover Sheet

Fax Cover Sheet Style Guidelines

Fonts:

Eras Bold Italic (logo)
Arial (Name and address)
Arial Black (Fax Information)

Colors:

194PMS (logos)
Black for type

301 GA Woodstock Drive
Downers Grove, Illinois 60515
630.616.2600 phone
630.616.3228 fax



Fax

To:	From:
Fax:	Pages: including cover
Phone:	Date:
Re:	CC:
<input type="checkbox"/> Urgent <input checked="" type="checkbox"/> For Review <input type="checkbox"/> Please Comment <input type="checkbox"/> Please Reply <input type="checkbox"/> Please Recycle	
* Comments:	

Edge 9x12 Envelope

9x12 Envelope Style Guidelines

Fonts:

Eras Bold Italic (logo)
Avant Garde (Address)

Colors:

194PMS (logos)
Black for type



Proposal Template

Proposal Template Style Guidelines

Fonts:

Arial Black (major headings 14pt bold, header, 8pt regular italic)

Arial (body text 11pt, subheads 11pt bold)

Graphics:

Special header and footer graphics



Proposal to Service the Chicago Department of Procurement Services

Executive Summary

Edge Systems is pleased to respond to the City of Chicago Department of Procurement Services' (DPS) request for web-based disclosure solutions. Based on our understanding of DPS requirements, and our current work with the DPS and other City Departments in providing similar solutions, we feel that Edge Systems is uniquely qualified to provide all of the solutions and services that the DPS requires.

Current Edge-Based DPS Solution

Currently, Edge Systems provides the service outlined in bullet two of the "Background" section of the DPS Technology Requirements document, dated 12/18/02. Specifically, the current solution provides convenient web access to contracts and their associated amendments and disclosure documents. This application is accessed through the City of Chicago home page and allows users to: 1. Search for a contract folder using the contract number, contractor's name, or words within the contract title; 2. Select a folder from a hit list of items that match the search criteria, and 3. View the contract's summary information and the documents stored in the folder. The solution provides comprehensive search capability, and currently enables users to search both chronologically and alphabetically as required by the DPS. Simple, web-based navigation is provided through intuitive navigation bars and clear instructions. All documents are available in Adobe Acrobat (.pdf) format. Currently, Edge has scanned, indexed and hosted all contract documents (1,750 contracts totaling approx. 84,000 images) since July of 2002, with plans to scan additional documents as required by the DPS. This site can be viewed by anyone with internet access by using Netscape or Microsoft Internet Explorer.

Solutions in other City Departments

Edge Systems has provided a variety of solutions to other City departments that use the technology outlined in the DPS Technology Requirements Document. A summary of each departmental solution follows:

Dept. of Buildings: Edge Systems currently hosts over 7 million images at its secure hosting site. All document prep, scanning, QA and imaging was performed by Edge Systems personnel. Dept. of Buildings staff accesses documents through a client/server based system.

Fire Department: Edge Systems provided an imaging and document management system to electronically process grievance and arbitration matters for the Fire Department. Edge provides scanning and hosting of existing documents at its Wabash Ave. facility, and implemented a scanning system at the Fire Department so that employees can scan future documents. An internet-based system was developed to allow Fire Department employees to access and process grievance and arbitration issues on-line.



Proposal Cover

Proposal Cover Style Guidelines

Fonts:

Arial black, Arial black Italic (reverse type)

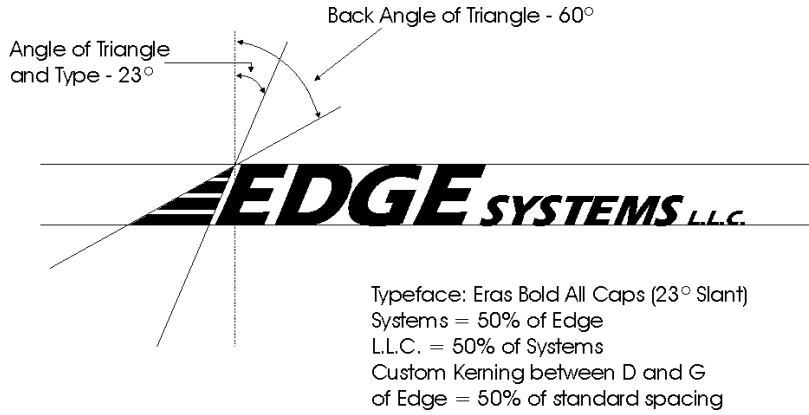
Colors:

PMS194



Logo Guidelines

Logo Guidelines	
Fonts:	Eras Bold, All Caps
Colors:	PMS194 Black White



"Stacked" Logo



There are two accepted forms of the Edge logo depending upon layout requirements.

"Long" Logo

